



NOVEMBER 1998

**1307.1**

# ***ECONOMIC INDICATORS***

**NEW SOUTH WALES**

EMBARGO: 11:30AM (CANBERRA TIME) MON 16 NOVEMBER 1998

## **C O N T E N T S**

	<i>page</i>
Notes . . . . .	2
NSW Overview . . . . .	3
Main features . . . . .	4
List of tables and graphs . . . . .	5
Population . . . . .	6
Labour . . . . .	7
Production . . . . .	10
Building . . . . .	11
Retail trade . . . . .	12
New motor vehicle registrations . . . . .	13
Tourism . . . . .	14
Consumer and producer price indexes . . . . .	15
Finance . . . . .	16
State Government finance . . . . .	17
Investment . . . . .	18
International trade . . . . .	19

- For more information about these and related statistics, contact Bill Markham on (02) 9268 4376 or e-mail [bill.markham@abs.gov.au](mailto:bill.markham@abs.gov.au) or refer to the back cover of this publication.

## NOTES

### GENERAL

This publication provides information on a wide range of economic indicators which are the latest available at the time of publication. In a number of cases, figures appearing in this summary are preliminary and are subject to revision in subsequent issues.

### CHANGES IN THIS ISSUE

There have been a number of changes to procedures involved in the approval of building work in NSW following the implementation of the Environment Planning and Assessment (Amendment) Act 1997 which came into effect on 1 July 1998. No estimate has been made for the alterations and additions to residential buildings and the seasonally adjusted estimate in tables 8 and 9 have been suppressed. For more information, refer to *Building Approvals, New South Wales and Australian Capital Territory, August 1998* (Cat. no. 8731.1).

In Tables 26 and 27, Imports are now recorded as Australian Customs Value.

### SEASONAL ADJUSTMENT AND TREND ESTIMATION

Seasonal adjustment is a means of removing the estimated effects of normal seasonal variation from a series so that the effects of other variations on that series can be more clearly recognised. Seasonal adjustment does not aim to remove the irregular or non-seasonal influences which may be present. This means that movements of seasonally adjusted estimates may not be reliable indicators of trend behaviour. Smoothing seasonally adjusted series produces a measure of the underlying trend by reducing the impact of the irregular component of the series. This smoothing technique does result in revisions to the most recent estimates as additional observations become available. For an explanation of seasonal adjustment derivation, refer to the publication *Seasonally Adjusted Indicators* (Cat. no. 1308.0).

### STANDARD ERRORS OF ESTIMATES

One measure of the variability which occurs as a result of surveying only samples of the total business population is the standard error. There are about two chances in three that a survey estimate is within one standard error of the figure that would have been obtained if all businesses had been included, and about 19 chances in 20 that it is within two standard errors. The standard error can also be expressed as a percentage of the estimate and this is known as the relative standard error (RSE). For detailed explanatory notes and definitions for the items shown in this publication, readers are referred to the specific ABS publications.

Current publications produced by the ABS are listed in the *Catalogue of Publications* (Cat. no. 1101.0). A *Release Advice* (Cat. no. 1105.0) is issued on Tuesdays and Fridays which lists publications to be released in the next few days. These publications are available from any ABS office.

### SYMBOLS AND OTHER USAGES

kWh	kilowatt hour
teraJ	terajoule
n.a.	not available
n.p.	not available for publication but included in totals where applicable
n.y.a	not yet available
r	figure or series revised since previous issue
. .	not applicable
—	nil or rounded to zero
—	break in continuity of series (where a line is drawn across a column between two consecutive figures)

Gregory W. Bray  
Regional Director  
New South Wales

## NSW OVERVIEW

---

### EMPLOYMENT

The number of employed persons in NSW was 2,892,600 in seasonally adjusted terms in September 1998, a rise of 1.9% on the previous month. National employment rose by 41,000 during the month.

### UNEMPLOYMENT

Unemployment in NSW fell by 2.4% in September 1998 to a seasonally adjusted figure of 229,400. The NSW unemployment rate was 7.3% in September compared to 7.6% in August while the national rate remained steady at 8.1%.

### JOB VACANCIES

Job vacancies in NSW rose by 29% in the August quarter 1998 to 26,400. National job vacancies were unchanged at 73,000.

### BUILDING APPROVALS

The seasonally adjusted number of new dwelling units approved for NSW in August 1998 decreased by 10.3% from the previous month to 4,412.

### RETAIL

In seasonally adjusted terms, total retail sales for NSW in August 1998 was \$3,931.4 million. The figure a year ago was \$3,909.4 million.

### NEW MOTOR VEHICLE REGISTRATIONS

New motor vehicle registrations for NSW in seasonally adjusted terms in August 1998 fell by 15.2% from the previous month to 21,528.

### FINANCE

The value of housing finance commitments for owner occupation in NSW in August 1998 was \$1,792 million. This represented a 12.4% decrease from July 1998 and a slight decline since August 1997.

## MAIN FEATURES

.....

### RETAIL

In seasonally adjusted terms, total retail turnover for NSW in August 1998 was \$3,931.4 million. A year earlier the figure was \$3,909.4 million. Nationally, total retail turnover for August 1998 was \$11,545.6 million, an increase of 4.5% compared to August 1997.

Of all industry groups in NSW, only Department stores showed significant movement. Retail turnover for this group was \$348.5 million, a decrease of 11.9% on July 1998, but an increase of 3.9% on the figure at August 1997. The Food retailing industry contributed the largest share, \$1,483.1 million (37.7%), to the total retail turnover for the State in August 1998.

Nationally, Department stores also showed significant movement between July and August 1998 with a fall in retail turnover of 10.3% to \$1,004.8 million. Compared with August 1997, notable increases were experienced by Clothing and soft good retailing, 13.7% to \$804.3 million, Hospitality and services, 7.0% to \$2,005.6 million and Food retailing, 4.9% to \$4,664.6 million. As with NSW, the Food retailing industry group contributed the largest share (40.4%) to total national retail turnover.

### LABOUR FORCE

In the year to September 1998, full-time employment in NSW increased by 62,000 or 2.9% to 2.2 million and total employment increased by 78,000 or 2.8% to 2.9 million (based on original figures). Female employment increased by 4.3% for full-time workers and by 3.7% in total compared to increases of 2.1% for males in both cases.

The number of unemployed persons in NSW fell by 11,000 (4.5%) over the year and those looking for full-time work decreased by 9,200 (4.9%). Unemployment among males decreased by 8.3% over this period and while female unemployment increased during the year, by September 1998 it had fallen back to the same level as 12 months earlier.

The unemployment rate in NSW fell from 7.9% in September 1997 to 7.4% in September 1998. Over this period, the male unemployment rate fell from 8.4% to 7.6% while the female rate of 7.1% in September 1998 was about the same as a year earlier. The participation rate in September 1998 was 62.9% (72.4% for males and 53.8% for females) compared to 62.3% last September.

# LIST OF TABLES AND GRAPHS

Page

## POPULATION

<b>1</b>	Estimated resident population, NSW .....	6
----------	--	---

## LABOUR

<b>2</b>	Labour data, latest time period, NSW and Australia .....	7
<b>3</b>	Labour data, time series, NSW .....	7
<b>4</b>	Labour force status of the civilian population, NSW .....	8
<b>5</b>	Graph: Unemployment rates, NSW and Australia .....	9

## PRODUCTION

<b>6</b>	Coal, electricity and gas production, latest time period, NSW and Australia ..	10
<b>7</b>	Coal, electricity and gas production, time series, NSW .....	10

## BUILDING

<b>8</b>	Building approvals, latest time period, NSW and Australia .....	11
<b>9</b>	Building approvals, time series, NSW .....	11

## RETAIL TRADE

<b>10</b>	Turnover of retail establishments, latest time period, NSW and Australia ....	12
<b>11</b>	Turnover of retail establishments, time series, NSW .....	12

## NEW MOTOR VEHICLE REGISTRATIONS

<b>12</b>	New motor vehicle registrations, latest time period, NSW and Australia ....	13
<b>13</b>	New motor vehicle registrations, time series, NSW .....	13

## TOURISM

<b>14</b>	Accommodation Establishments, latest time period, NSW and Australia. ....	14
<b>15</b>	Accommodation Establishments, time series, Sydney and NSW. ....	14
<b>16</b>	Graph: Hotels, motels etc., monthly room occupancy rates, Sydney Tourism Region and NSW. ....	14

## CONSUMER AND PRODUCER PRICE INDEXES

<b>17</b>	Consumer and producer price indexes, latest time period, NSW and Australia .....	15
<b>18</b>	Consumer and producer price indexes, time series, NSW .....	15
<b>19</b>	Graph: Consumer Price Index, Sydney and average of 8 capital cities .....	15

## HOUSING FINANCE

<b>20</b>	Finance commitments, latest time period, NSW and Australia .....	16
<b>21</b>	Finance commitments, time series, NSW .....	16

## STATE GOVERNMENT FINANCE

<b>22</b>	Government finance, budget sector, time series, NSW .....	17
-----------	---	----

## INVESTMENT

<b>23</b>	Actual private new fixed capital expenditure, latest time period, NSW and Australia .....	18
<b>24</b>	Actual private new fixed capital expenditure, time series, NSW. ....	18
<b>25</b>	Graph: Actual private new fixed capital expenditure, NSW. ....	18

## INTERNATIONAL TRADE

<b>26</b>	Imports and exports, latest time period, NSW and Australia .....	19
<b>27</b>	Imports and exports, time series, NSW .....	19

# 1

## ESTIMATED RESIDENT POPULATION, NSW

Period	Estimated resident population at end of period			Increase during period			Mean estimated resident population for year ended	
	Males	Females	Persons	Natural increase(a)	Net estimated migration	Total increase(b)	30 June	31 December
	'000	'000	'000	'000	'000	'000	'000	'000
<b>1995</b>	3 064.0	3 104.8	6 168.8	42.0	33.7	78.6	6 093.2	6 128.0
<b>1996</b>	3 098.2	3 142.6	6 240.9	40.6	29.3	72.1	6 167.2	6 204.2
<b>1997</b>	3 131.5	3 174.8	6 306.3	11.9	1.4	13.3	6 240.9	6 276.1
<b>1996</b>								
December qtr	3 098.2	3 142.6	6 240.9	11.1	8.4	19.5	..	..
<b>1997</b>								
March qtr	3 108.6	3 152.6	6 261.3	11.4	9.0	20.4	..	..
June qtr	3 115.3	3 159.0	6 274.4	11.0	2.1	13.1	..	..
September qtr	3 124.9	3 168.1	6 293.0	7.6	11.0	18.6	..	..
December qtr	3 131.5	3 174.8	6 306.3	11.9	1.4	13.3	..	..
<b>1998</b>								
March qtr	3 144.0	3 185.8	6 329.8	9.9	13.5	23.4	..	..

<sup>a</sup> Excess of live births over deaths.

<sup>b</sup> For dates prior to June 1996, differences between the total increase shown and the sum of the natural increase and net estimated migration arise from retrospective adjustments to population estimates (which are made after each Census) to compensate for any intercensal discrepancy. A description of intercensal discrepancy is contained in the ABS information paper Demographic Estimates: Concepts, Sources and Methods (Cat. no. 3228.0).

Source: Australian Demographic Statistics (Cat. no. 3101.0)

## 2

### LABOUR, NSW AND AUSTRALIA

Indicator	Unit	Latest period	Latest figure	New South Wales		Australia		
				Change from prior period	Change from same period prior year	Latest figure	Change from prior period	Change from same period prior year
Employed persons (seasonally adjusted)	'000	Sep 98	2 892.6	1.9	2.7	8 652.5	0.5	2.4
Unemployed persons (seasonally adjusted)	'000	Sep 98	229.4	-2.4	-4.5	760.6	-0.1	-3.4
Labour force (seasonally adjusted)	'000	Sep 98	3 122.0	1.6	2.2	9 413.1	0.4	1.9
Participation rate (seasonally adjusted)	%	Sep 98	62.3	1.3	1.0	63.6	0.3	0.6
Unemployment rate (seasonally adjusted)	%	Sep 98	7.3	-3.9	-7.6	8.1	0.0	4.9
Industrial disputes—working days lost	'000	Jul 98	8.8	-72.6	-52.4	20.3	-71.5	-50.2
Job vacancies	'000	Aug 98	26.4	28.8	36.7	73.0	-0.3	5.4
Average weekly employee earnings—full-time adult ordinary time earnings (seasonally adjusted)	\$	May 98	747.2	0.4	3.4	725.6	0.6	4.3

Source: *Labour Force, Australia, Preliminary* (Cat. no. 6202.0), *Job Vacancies and Overtime, Australia* (Cat. no. 6354.0), *Industrial Disputes, Australia* (Cat. no. 6321.0), *Average Weekly Earnings, States and Australia* (Cat. no. 6302.0)

## 3

### LABOUR, NSW

Period	Seasonally adjusted						Job vacancies
	Employed persons	Unemployed persons	Labour force	Participation rate	Unemployment rate	Industrial disputes (working days lost)	
	'000	'000	'000	%	%	'000	
<b>1997</b>							
July	2 805.7	255.4	3 061.1	62.0	8.3	18.5	..
August	2 774.4	242.2	3 016.6	61.0	8.0	22.1	19.3
September	2 815.2	240.2	3 055.5	61.7	7.9	23.0	..
October	2 787.7	244.1	3 031.7	61.2	8.1	28.0	..
November	2 831.9	238.7	3 070.6	61.9	7.8	8.1	22.8
December	2 836.6	228.0	3 064.7	61.7	7.4	4.8	..
<b>1998</b>							
January	2 843.3	227.1	3 070.4	61.8	7.4	3.3	..
February	2 805.4	234.5	3 039.9	61.1	7.7	9.3	23.5
March	2 830.3	230.7	3 061.0	61.5	7.5	19.7	..
April	2 850.4	220.5	3 070.9	61.6	7.2	8.1	..
May	2 835.4	231.9	3 067.3	61.5	7.6	28.1	20.5
June	2 864.6	234.3	3 098.9	62.1	7.6	32.1	..
July	2 886.7	232.9	3 119.6	62.4	7.5	8.8	..
August	2 839.2	235.1	3 074.3	61.5	7.6	n.y.a.	26.4
September	2 892.6	229.4	3 122.0	62.3	7.3	n.y.a.	..

Source: *Labour Force, Australia, Preliminary* (Cat. no. 6202.0), *Industrial Disputes, Australia* (Cat. no. 6321.0)

Month	Employed		Unemployed		Labour force	Not in labour force	Civilian population aged 15 years and over	Unemployment rate(a)	Participation rate(b)
	Full-time workers	Total	Looking for full-time work	Total					
	'000	'000	'000	'000	'000	'000	'000	%	%
MALES									
<b>September</b>									
1994	1 374.9	1 540.1	143.7	163.3	1 703.3	631.7	2 335.1	9.6	72.9
1995	1 421.5	1 595.4	126.3	145.4	1 740.7	623.0	2 363.7	8.4	73.6
1996	1 425.9	1 605.9	125.6	145.1	1 751.0	648.1	2 399.1	8.3	73.0
<b>1997</b>									
July	1 422.3	1 600.4	130.3	145.4	1 745.8	677.8	2 423.6	8.3	72.0
August	1 390.3	1 567.6	120.3	135.2	1 702.8	723.7	2 426.5	7.9	70.2
September	1 434.3	1 613.3	126.1	147.6	1 760.9	668.5	2 429.3	8.4	72.5
October	1 428.1	1 595.3	121.3	138.9	1 734.2	698.1	2 432.3	8.0	71.3
November	1 431.3	1 615.2	119.0	138.1	1 753.3	681.9	2 435.2	7.9	72.0
December	1 456.8	1 637.6	116.8	135.1	1 772.7	665.4	2 438.1	7.6	72.7
<b>1998</b>									
January	1 441.8	1 616.3	127.1	141.7	1 758.0	682.3	2 440.3	8.1	72.0
February	1 431.8	1 599.2	129.3	150.7	1 749.9	692.5	2 442.4	8.6	71.6
March	1 432.2	1 613.1	123.5	140.6	1 753.7	690.9	2 444.6	8.0	71.7
April	1 441.4	1 622.7	104.7	122.9	1 745.6	701.8	2 447.3	7.0	71.3
May	1 434.0	1 614.6	115.7	133.2	1 747.8	702.3	2 450.1	7.6	71.3
June	1 443.0	1 623.9	117.7	134.6	1 758.5	694.4	2 452.9	7.7	71.7
July	1 463.8	1 639.4	115.6	128.2	1 767.6	687.9	2 455.5	7.3	72.0
August	1 422.9	1 597.4	116.8	136.1	1 733.5	724.5	2 458.1	7.9	70.5
September	1 464.5	1 646.5	118.1	135.3	1 781.8	678.8	2 460.6	7.6	72.4
FEMALES									
<b>September</b>									
1994	704.9	1 170.9	71.2	110.8	1 281.7	1 138.6	2 420.3	8.6	53.0
1995	738.8	1 215.6	58.4	84.9	1 300.5	1 146.5	2 447.0	6.5	53.1
1996	722.0	1 208.4	66.6	104.0	1 312.4	1 173.8	2 486.2	7.9	52.8
<b>1997</b>									
July	729.6	1 213.2	61.7	92.7	1 305.9	1 207.7	2 513.6	7.1	52.0
August	703.9	1 182.9	65.3	92.7	1 275.6	1 240.8	2 516.5	7.3	50.7
September	722.2	1 226.8	63.4	96.1	1 322.9	1 196.5	2 519.4	7.3	52.5
October	721.0	1 194.1	68.1	97.3	1 291.5	1 230.6	2 522.1	7.5	51.2
November	725.5	1 228.3	62.1	87.8	1 316.1	1 208.6	2 524.7	6.7	52.1
December	730.8	1 234.9	66.3	95.7	1 330.6	1 196.8	2 527.4	7.2	52.6
<b>1998</b>									
January	721.4	1 185.5	71.4	102.6	1 288.1	1 241.2	2 529.3	8.0	50.9
February	707.1	1 189.9	72.1	111.7	1 301.7	1 229.5	2 531.1	8.6	51.4
March	715.8	1 217.8	73.7	105.3	1 323.1	1 209.9	2 533.0	8.0	52.2
April	720.0	1 226.2	63.2	96.2	1 322.4	1 212.9	2 535.3	7.3	52.2
May	707.9	1 220.7	68.5	94.0	1 314.7	1 222.9	2 537.7	7.1	51.8
June	727.3	1 242.0	57.2	88.3	1 330.4	1 209.6	2 540.0	6.6	52.4
July	762.9	1 255.2	59.9	88.7	1 344.0	1 198.3	2 542.3	6.6	52.9
August	721.7	1 216.6	62.7	85.2	1 301.9	1 242.7	2 544.5	6.5	51.2
September	753.6	1 271.8	62.0	97.4	1 369.2	1 177.6	2 546.8	7.1	53.8

For footnotes see end of table.



# 4

## LABOUR FORCE STATUS, NSW—ORIGINAL *continued*

Month	Employed		Unemployed		Labour force	Not in labour force	Civilian population aged 15 years and over	Unemployment rate(a)	Participation rate(b)
	Full-time workers	Total	Looking for full-time work	Total					
	'000	'000	'000	'000	'000	'000	'000	%	%
PERSONS									
<b>September</b>									
1994	2 079.8	2 711.0	214.9	274.0	2 985.0	1 770.4	4 755.4	9.2	62.8
1995	2 160.3	2 811.0	184.7	230.3	3 041.2	1 769.5	4 810.7	7.6	63.2
1996	2 147.9	2 814.3	192.1	249.2	3 063.4	1 821.9	4 885.3	8.1	62.7
<b>1997</b>									
July	2 151.9	2 813.6	192.1	238.1	3 051.7	1 885.5	4 937.2	7.8	61.8
August	2 094.3	2 750.5	185.6	228.0	2 978.4	1 964.5	4 942.9	7.7	60.3
September	2 156.5	2 840.0	189.5	243.7	3 083.8	1 865.0	4 948.7	7.9	62.3
October	2 149.1	2 789.4	189.3	236.2	3 025.7	1 928.7	4 954.3	7.8	61.1
November	2 156.7	2 843.5	181.1	225.9	3 069.4	1 890.5	4 959.9	7.4	61.9
December	2 187.6	2 872.6	183.1	230.8	3 103.3	1 862.2	4 965.6	7.4	62.5
<b>1998</b>									
January	2 163.2	2 801.8	198.5	244.3	3 046.1	1 923.5	4 969.5	8.0	61.3
February	2 138.9	2 789.1	201.4	262.4	3 051.5	1 922.0	4 973.5	8.6	61.4
March	2 148.0	2 830.9	197.1	245.8	3 076.8	1 900.8	4 977.5	8.0	61.8
April	2 161.5	2 848.9	167.9	219.1	3 068.0	1 914.7	4 982.7	7.1	61.6
May	2 141.9	2 835.3	184.2	227.2	3 062.5	1 925.2	4 987.8	7.4	61.4
June	2 170.3	2 865.9	174.9	223.0	3 088.8	1 904.1	4 992.9	7.2	61.9
July	2 226.8	2 894.6	175.5	216.9	3 111.6	1 886.2	4 997.7	7.0	63.3
August	2 144.7	2 814.1	179.5	221.3	3 035.4	1 967.2	5 002.6	7.3	60.7
September	2 218.1	2 918.3	180.3	232.7	3 151.0	1 856.4	5 007.4	7.4	62.9

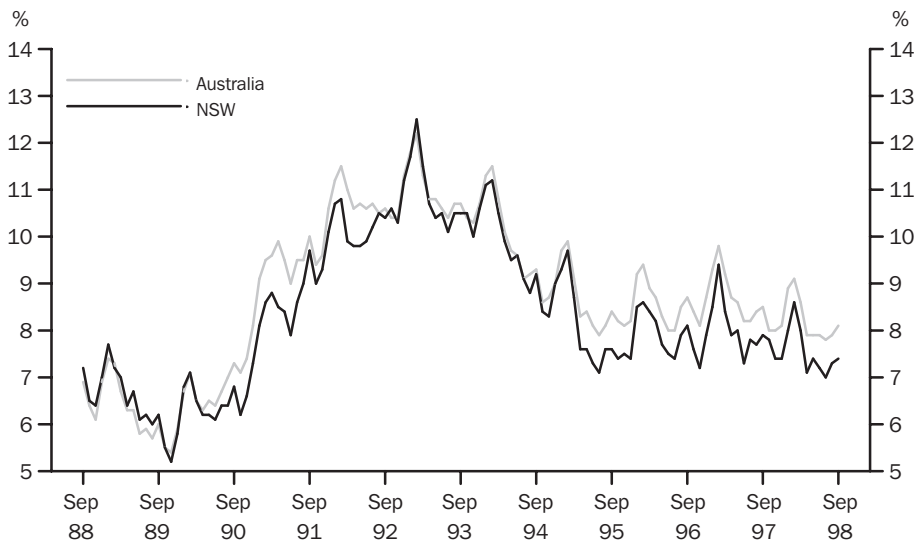
<sup>a</sup> The number of unemployed in each group expressed as a percentage of the labour force in the same group.

<sup>b</sup> The labour force in each group expressed as a percentage of the civilian population aged 15 and over in the same group.

Source: Labour Force, Australia, Preliminary (Cat. no. 6202.0)

# 5

## UNEMPLOYMENT RATE—ORIGINAL



Source: Labour Force, Australia, Preliminary (Cat. no. 6202.0).

# 6

## COAL, ELECTRICITY AND GAS PRODUCTION, NSW AND AUSTRALIA—ORIGINAL

Indicator	Unit	Latest period	New South Wales				Australia		
			Latest figure	Change from prior period		Latest figure	Change from prior period		Change from same period prior year
				%	%		%	%	
Raw coal won—									
Underground	'000 tonnes	July 98	5 408	11.7	–16.7	6 864	9.5		–13.7
Open cut	'000 tonnes	July 98	7 408	8.8	4.6	16 021	8.4		2.7
Total	'000 tonnes	July 98	12 817	10.0	–5.6	22 886	8.8		–2.8
Electricity	mill. kWh	Jun qtr 98	15 561	8.1	–2.6	44 281	2.4		3.2
Gas(a)	teraJ	Jun qtr 98	29 614	31.5	–1.0	174 491	23.7		1.9

<sup>a</sup> Available for issue through mains. Includes ACT.

Source: Joint Coal Board, Manufacturing Production, Australia (Cat. no. 8301.0)

# 7

## COAL, ELECTRICITY AND GAS PRODUCTION, NSW—ORIGINAL

Period	Raw coal won			Electricity	Gas(a)
	Underground	Open cut	Total		
	'000 tonnes	'000 tonnes	'000 tonnes	mill. kWh	teraJ
<b>1995–96</b>	54 314	58 775	113 089	62 047	104 141
<b>1996–97</b>	54 643	69 037	123 680	62 788	109 284
<b>1997–98</b>	58 249	75 049	133 298	61 804	111 665
<b>1997</b>					
May	5 183	6 626	11 809	n.a.	n.a.
June	4 717	5 785	10 502	n.a.	n.a.
July	6 491	7 085	13 576	16 632	34 086
August	5 124	6 112	11 236		
September	4 911	5 792	10 703		
October	4 498	6 716	11 214	15 220	25 445
November	4 252	6 084	10 336		
December	4 090	5 997	10 087		
<b>1998</b>					
January	5 361	6 322	11 683	14 390	22 521
February	4 560	5 748	10 308		
March	4 326	5 515	9 841		
April	5 146	7 016	12 162	15 561	29 614
May	4 648	5 851	10 499		
June	4 842	6 811	11 653		
July	5 408	7 408	12 817	n.a.	n.a.

<sup>a</sup> Available for issue through mains. Includes ACT.

Source: Joint Coal Board, Manufacturing Production, Australia (Cat. no. 8301.0)

Indicator	Unit	Latest period	Latest figure	New South Wales		Australia		
				Change from prior period	Change from same period prior year	Latest figure	Change from prior period	Change from same period prior year
				%	%		%	%
Number of dwelling units(a) (seasonally adjusted)—								
New houses	No.	Aug 98	2 415	–1.4	9.6	8 772	–1.2	1.5
Total	No.	Aug 98	4 412	–10.3	–7.0	12 393	–6.4	–4.3
Value of new residential building (seasonally adjusted)	\$m	Aug 98	547.3	–3.0	–10.9	1 404.0	4.4	–2.5
Value of alterations and additions to residential building(b) (seasonally adjusted)	\$m	Aug 98	n.a.	n.a.	n.a.	228.3	–14.6	–0.7
Value of non-residential building(c) (original)	\$m	Aug 98	598.9	81.5	–15.7	1 442.3	63.7	5.4
Value of all building (original)	\$m	Aug 98	1 216.4	10.3	–13.5	3 111.2	15.0	2.1

<sup>a</sup> Includes dwelling units approved as part of the construction of non-residential building and alterations and additions to existing buildings (including conversions to dwelling units).

<sup>b</sup> Valued at \$10,000 or more. Includes conversions of existing buildings into residential buildings. Data for August 1998 are not available, refer to the notes section on page 2.

<sup>c</sup> Valued at \$50,000 or more.

Source: Building Approvals, Australia (Cat. no. 8731.0)

Period	Number of dwelling units(a), seasonally adjusted				Value of building approvals			
	New houses		Total		Seasonally adjusted		Original	
	Private sector	Total	Private sector	Total	Alterations and additions to residential building	Non-residential building(c)	All building	
	no.	no.	no.	no.	\$m	\$m	\$m	\$m
<b>1995–96</b>	..	..	..	..	..	..	3 650.3	9 168.6
<b>1996–97</b>	..	..	..	..	..	..	5 169.2	11 356.6
<b>1997–98</b>	..	..	..	..	..	..	5 894.7	13 287.2
<b>1997</b>								
June	2 111	2 120	4 118	4 277	460.7	127.3	353.0	903.0
July	2 122	2 134	3 621	3 700	427.2	95.3	584.9	1 156.7
August	2 198	2 203	4 622	4 742	614.2	99.5	710.5	1 405.9
September	2 181	2 186	3 844	3 961	430.3	93.8	396.4	958.0
October	2 424	2 434	4 045	4 077	479.4	108.9	520.3	1 123.1
November	2 399	2 411	4 424	4 470	503.1	103.5	380.6	1 028.0
December	2 545	2 563	4 476	4 620	529.0	119.0	286.0	885.8
<b>1998</b>								
January	2 621	2 648	4 395	4 506	450.2	144.0	477.0	984.0
February	2 451	2 482	3 635	3 767	413.4	122.5	461.8	943.8
March	2 574	2 592	4 496	4 633	522.9	112.7	386.4	988.9
April	2 578	2 585	4 909	5 025	577.0	160.4	527.0	1 263.2
May	2 405	2 419	4 050	4 127	463.7	129.4	640.7	1 335.0
June	2 483	2 529	5 256	5 357	588.9	139.1	523.1	1 214.8
July r	2 289	2 450	4 594	4 920	564.1	142.5	329.9	1 103.2
August	2 402	2 415	4 309	4 412	547.3	n.a.	598.9	1 216.4

<sup>a</sup> Includes dwelling units approved as part of the construction of non-residential building and alterations and additions to existing buildings (including conversions to dwelling units).

<sup>b</sup> Valued at \$10,000 or more. Includes conversions of existing buildings into residential buildings. Data for August 1998 are not available, refer to the notes section on page 2.

<sup>c</sup> Valued at \$50,000 or more.

Source: Building Approvals, Australia (Cat. no. 8731.0)

Indicator	Latest period	New South Wales			Australia		
		Latest figure	Change from prior period	Change from same period prior year	Latest figure	Change from prior period	Change from same period prior year
		\$m	%	%	\$m	%	%
Food retailing	Aug 98	1 483.1	-2.1	-1.5	4 664.6	-0.4	4.9
Department stores	Aug 98	348.5	-11.9	3.9	1 004.8	-10.3	3.4
Clothing and soft good retailing	Aug 98	286.4	1.8	4.1	804.3	1.8	13.7
Household good retailing	Aug 98	425.6	-0.3	-2.5	1 253.6	1.1	-2.7
Recreational good retailing	Aug 98	205.2	-6.5	-3.9	653.2	1.2	2.5
Other retailing	Aug 98	397.3	-2.1	2.7	1 159.6	-2.4	3.0
Hospitality and services	Aug 98	785.4	-2.1	3.9	2 005.6	1.6	7.0
<b>Total value of retail sales</b>	<b>Aug 98</b>	<b>3 931.4</b>	<b>-2.8</b>	<b>0.6</b>	<b>11 545.6</b>	<b>-0.8</b>	<b>4.5</b>

<sup>a</sup> The figures shown are derived from a monthly survey of retail establishments. Excludes motor vehicle, boat and caravan dealers, service stations, smash repairers, tyre and battery retailers, bread and milk vendors, footwear repairers and electrical appliance repairers n.e.c. Retail establishments which do not have employees are excluded from the survey. Turnover includes retail sales, wholesale sales, takings from repairs, meals and hiring of goods; and commissions from agency activity (e.g. commissions received from collecting dry cleaning, selling lottery tickets etc.)

Source: Retail Trade, Australia (Cat. no. 8501.0).

Period	Food retailing	Department stores	Clothing and soft good retailing	Household good retailing	Recreational good retailing	Other retailing	Hospitality and services	Total
	\$m	\$m	\$m	\$m	\$m	\$m	\$m	\$m
<b>1997</b>								
June	1 470.6	327.7	277.9	451.5	224.2	391.5	764.5	3 907.8
July	1 509.1	346.9	276.7	440.0	216.4	389.4	751.0	3 929.4
August	1 506.3	335.5	275.1	436.6	213.5	386.7	755.6	3 909.4
September	1 529.3	349.3	276.9	433.1	225.9	378.7	762.3	3 955.5
October	1 524.9	343.4	274.7	421.2	223.0	394.1	762.4	3 943.6
November	1 524.4	349.4	279.0	402.3	220.3	410.8	766.8	3 952.9
December	1 546.0	331.9	282.0	420.7	226.6	406.8	772.2	3 986.2
<b>1998</b>								
January	1 560.2	367.4	267.4	438.8	234.4	398.3	760.3	4 026.8
February	1 558.1	328.7	266.5	437.4	224.7	407.0	754.4	3 976.9
March	1 547.6	334.2	265.2	444.7	224.0	394.2	760.3	3 970.3
April	1 515.9	354.9	269.6	434.1	229.8	405.0	762.3	3 971.5
May	1 510.2	362.3	286.9	426.9	221.5	407.7	775.4	3 991.0
June	1 532.2	312.4	271.8	422.6	224.5	412.4	775.2	3 951.0
July	1 514.5	395.7	281.4	426.9	219.5	406.0	801.9	4 046.0
August	1 483.1	348.5	286.4	425.6	205.2	397.3	785.4	3 931.4

<sup>a</sup> The figures shown are derived from a monthly survey of retail establishments. Excludes motor vehicle, boat and caravan dealers, service stations, smash repairers, tyre and battery retailers, bread and milk vendors, footwear repairers and electrical appliance repairers n.e.c. Retail establishments which do not have employees are excluded from the survey. Turnover includes retail sales, wholesale sales, takings from repairs, meals and hiring of goods; and commissions from agency activity (e.g. commissions received from collecting dry cleaning, selling lottery tickets etc.)

Source: Retail Trade, Australia (Cat. no. 8501.0).

# 12

## NEW MOTOR VEHICLE REGISTRATIONS(a), NSW AND AUSTRALIA—SEASONALLY ADJUSTED

Indicator	Latest period	New South Wales			Australia		
		Latest figure	Change from prior period	Change from same period prior year	Latest figure	Change from prior period	Change from same period prior year
		no.	%	%	no.	%	%
Passenger vehicles	Aug 98	18 250	-17.2	7.5	54 574	-11.2	9.0
Other vehicles (excluding motor cycles)	Aug 98	3 277	-2.2	19.9	10 233	-0.5	12.7
Total registrations (excluding motor cycles)	Aug 98	21 528	-15.2	9.2	64 807	-9.7	9.5

<sup>a</sup> Includes vehicles (other than those of the defence forces) owned by Government departments and authorities. Excludes mobile plant and equipment, tractors, trailers and non-motorised caravans.

Source: New Motor Vehicle Registrations, Australia, Preliminary (Cat. no. 9301.0).

# 13

## NEW MOTOR VEHICLE REGISTRATIONS(a), NSW—SEASONALLY ADJUSTED

Period	Passenger vehicles	Other vehicles (excluding motor cycles)	Total (excluding motor cycles)
	no.	no.	no.
<b>1997</b>			
June	17 978	2 728	20 706
July	17 377	2 763	20 141
August	16 977	2 732	19 709
September	18 454	2 711	21 165
October	18 920	2 729	21 650
November	18 995	2 513	21 507
December	18 315	3 020	21 335
<b>1998</b>			
January	19 116	2 967	22 083
February	18 501	3 259	21 760
March	17 747	2 978	20 725
April	19 342	3 450	22 791
May	18 640	3 282	21 923
June	20 817	3 203	24 020
July	22 040	3 351	25 391
August	18 250	3 277	21 528

<sup>a</sup> Includes vehicles (other than those of the defence forces) owned by Government departments and authorities. Excludes mobile plant and equipment, tractors, trailers and non-motorised caravans.

Source: New Motor Vehicle Registrations, Australia, Preliminary (Cat. no. 9301.0).

# 14

## ACCOMMODATION ESTABLISHMENTS(a) NSW AND AUSTRALIA—ORIGINAL

Indicator	Unit	Latest period	Latest figure	New South Wales		Latest figure	Australia	
				Change from prior period	Change from same period prior year		Change from prior period	Change from same period prior year
				%	%		%	%
Room nights	'000	June Qtr 98	2 890.3	-4.2	2.8	8 724.6	-3.7	3.2
Room occupancy rate	%	June Qtr 98	56.3	-5.8	-2.1	54.6	-5.9	-2.0
Takings	\$'000	June Qtr 98	316 721	-7.7	4.4	881 085	-7.8	3.1

<sup>a</sup> Licensed hotels with facilities, motels and guest houses and serviced apartments with 15 or more rooms or units.

Source: Tourist Accommodation, Australia (Cat. no. 8635.0)

# 15

## ACCOMMODATION ESTABLISHMENTS(a) SYDNEY AND NSW—ORIGINAL

Period	Sydney Tourism Region(b)			New South Wales		
	Room nights	Room occupancy rate	Takings	Room nights	Room occupancy rate	Takings
	'000	%	\$'000	'000	%	\$'000
<b>1997</b>						
March qtr	1 680.2	79.1	230 849	3 030.9	62.8	334 524
June qtr	1 515.1	70.5	209 163	2 810.3	57.5	303 313
September qtr	1 555.0	69.6	209 484	2 964.9	59.0	322 065
December qtr	1 653.5	73.0	235 244	3 081.0	60.8	343 650
<b>1998</b>						
March qtr	1 664.9	71.9	235 516	3 017.3	59.8	343 248
June qtr	1 568.3	66.3	216 500	2 890.3	56.3	316 721

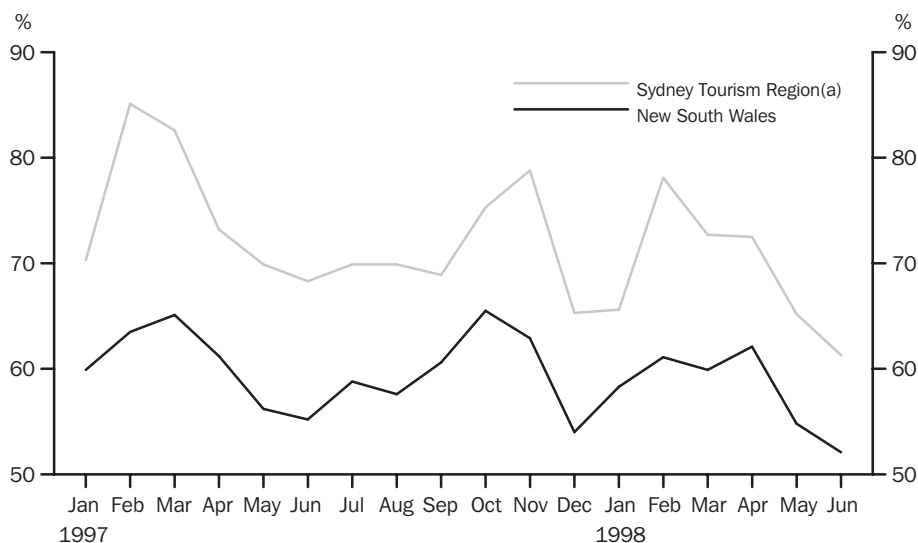
<sup>a</sup> Licensed hotels with facilities, motels and guest houses and serviced apartments with 15 or more rooms or units.

<sup>b</sup> Excludes Gosford, Wyong and Blue Mountains Statistical Local Areas.

Source: Tourist Accommodation, Small Area Data, NSW (Prod. no. 8635.1.40.001)

# 16

## ACCOMMODATION ESTABLISHMENTS MONTHLY ROOM OCCUPANCY RATE—ORIGINAL



(a) Excludes Gosford, Wyong and Blue Mountains Statistical Local Areas.

Source: Tourist Accommodation, Small Area Data, NSW (Prod. no. 8635.1.40.001)

# 17

## CONSUMER AND PRODUCER PRICE INDEXES, NSW AND AUSTRALIA

Indicator	Unit	Latest period	Latest figure	New South Wales		Latest figure	Australia(a)	
				Change from prior period	Change from same period prior year		Change from prior period	Change from same period prior year
				%	%		%	%
Consumer Price Index (all groups)	1989-90 =100.0	Sep qtr 98	121.9	0.4	1.8	121.3	0.2	1.3
Price index of materials used in house building (all groups)	1989-90 =100.0	Sep qtr 98	120.8	0.1	2.5	119.4	0.3	1.8
Price index of materials used in building other than house building (all groups)	1989-90 =100.0	Sep qtr 98	115.0	0.2	0.7	114.8	0.3	0.7

<sup>a</sup> For the Consumer Price Index this is the weighted average of eight capital cities and for the other two indexes, the weighted average of the six State capital cities.

Source: Consumer Price Index (Cat. no. 6401.0), Price Index of Materials Used in Building Other Than House Building, Six State Capital Cities (Cat. no. 6407.0), Price Index of Materials Used in House Building, Six State Capital Cities (Cat. no. 6408.0)

# 18

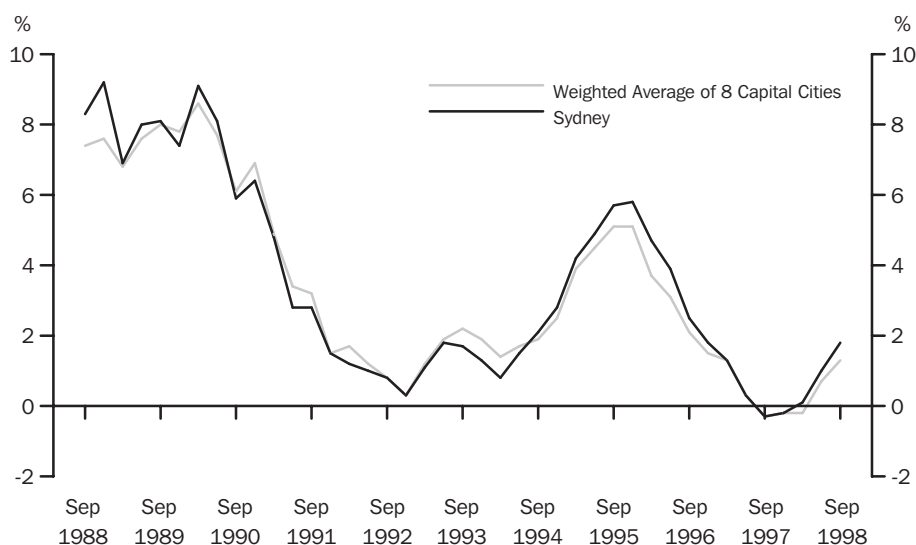
## CONSUMER AND PRODUCER PRICE INDEXES, NSW

Period	Consumer Price Index, all groups	Price Index of materials used in house building, all groups	Price Index of materials used in building other than house building, all groups
	1989-90 = 100.0	1989-90 = 100.0	1989-90 = 100.0
<b>1997</b>			
June qtr	120.2	117.3	113.9
September qtr	119.8	117.8	114.2
December qtr	120.1	119.4	114.2
<b>1998</b>			
March qtr	120.7	120.8	114.4
June qtr	121.4	120.7	114.8
September qtr	121.9	120.8	115.0

Source: Consumer Price Index (Cat. no. 6401.0), Price Index of Materials Used in Building Other Than House Building, Six State Capital Cities (Cat. no. 6407.0), Price Index of Materials Used in House Building, Six State Capital Cities (Cat. no. 6408.0).

# 19

## CONSUMER PRICE INDEX, ANNUAL RATE OF CHANGE



Source: Consumer Price Index (Cat. no. 6401.0)

Indicator	Latest period	New South Wales			Australia		
		Latest figure \$m	Change from prior period %	Change from same period prior year %	Latest figure \$m	Change from prior period %	Change from same period prior year %
Lending commitments for the construction or purchase of dwellings—							
Construction of dwellings	Aug 98	220	-16.3	2.9	692	-11.1	3.2
Purchase of newly erected dwellings	Aug 98	93	-23.9	-18.6	237	-8.5	-4.9
Purchase of established dwellings(a)	Aug 98	1 171	-8.8	1.4	2 763	-9.0	3.1
Refinancing of existing dwellings	Aug 98	308	-18.2	-1.0	752	-15.0	-12.5
Lending commitments for alterations and additions	Aug 98	85	-12.6	-6.1	200	-9.8	-7.1
Total lending commitments to individuals for housing(b)	Aug 98	1 792	-12.4	-0.1	4 445	-10.4	-0.4
Total lending commitments to individuals for housing (seasonally adjusted)(b)	Aug 98	1 821	-0.9	-0.2	4 515	-1.2	0.6

<sup>a</sup> Excludes refinancing.<sup>b</sup> Excludes alterations and additions.

Source: Housing Finance for Owner Occupation, Australia (Cat. no. 5609.0)

Period	Lending commitments for the construction or purchase of dwellings					Total lending commitments to individuals for housing(b)	
	Construction of dwellings \$m	Purchase of newly erected dwellings \$m	Purchase of established dwellings(a) \$m	Refinancing of existing dwellings \$m	Lending commitments for alterations and additions \$m	Original \$m	Seasonally adjusted \$m
<b>1995-96</b>	1 895	898	10 145	2 930	1 262	15 868	..
<b>1996-97</b>	2 117	1 234	12 566	4 062	1 221	19 979	..
<b>1997-98</b>	2 625	1 280	14 445	3 573	1 174	21 923	..
<b>1997</b>							
June	193	121	1 123	327	90	1 764	1 736
July	221	117	1 219	322	93	1 878	1 708
August	214	115	1 155	311	90	1 794	1 824
September	236	116	1 210	322	103	1 885	1 856
October	224	111	1 253	302	110	1 891	1 884
November	201	110	1 198	262	98	1 771	1 805
December	204	112	1 137	247	91	1 700	1 789
<b>1998</b>							
January	169	73	919	238	81	1 398	1 928
February	216	98	1 137	298	105	1 750	1 790
March	239	112	1 290	314	107	1 955	1 728
April	223	107	1 305	285	95	1 920	1 919
May	216	95	1 261	312	99	1 885	1 775
June	262	116	1 360	359	102	2 097	2 023
July	263	123	1 284	376	97	2 045	1 838
August	220	93	1 171	308	85	1 792	1 821

<sup>a</sup> Excludes refinancing.<sup>b</sup> Excludes alterations and additions.

Source: Housing Finance for Owner Occupation, Australia (Cat. no. 5609.0)



<i>Item</i>	<i>Actual 1995-96</i>	<i>Actual 1996-97</i>	<i>Estimates 1997-98</i>	<i>Preliminary 1997-98</i>
	<i>\$m</i>	<i>\$m</i>	<i>\$m</i>	<i>\$m</i>
<b>RECEIPTS</b>				
Current receipts				
Taxes, fees and fines				
Stamp duties	2 630	3 193	3 373	3 700
Payroll tax	2 876	3 153	3 338	3 393
Land tax	575	641	786	862
Motor vehicle tax	937	904	930	948
Gaming and betting	1 179	1 209	1 392	1 338
Licences	1 729	1 754	1 979	145
Commonwealth Safety Net Taxes	—	—	—	1 662
Other	943	1 086	1 114	918
Land transactions and royalties	246	243	238	244
Income from Non Budget Sector Enterprises	1 290	1 481	1 341	1 500
Commonwealth General Purpose Recurrent Grants	4 517	4 673	4 900	4 808
less—State Fiscal Contribution	—	210	216	217
Commonwealth Specific Purpose Recurrent Grants	2 757	3 025	2 962	3 039
Other	729	566	626	559
<i>Total current receipts</i>	<i>20 408</i>	<i>21 718</i>	<i>22 763</i>	<i>22 899</i>
Capital receipts				
Commonwealth General Purpose Capital Grants	—	—	—	—
Commonwealth Specific Purpose Capital Grants	867	832	854	724
Other	11	254	228	226
<i>Total capital receipts</i>	<i>877</i>	<i>1 086</i>	<i>1 081</i>	<i>950</i>
<b>Total current and capital receipts</b>	<b>21 285</b>	<b>22 804</b>	<b>23 844</b>	<b>23 849</b>
<b>EXPENDITURE</b>				
Current expenditure				
Departmental payments				
Services				
Health	5 116	5 394	5 585	5 743
Education(a)	4 641	4 912	5 174	5 032
Law and order(b)	1 247	1 672	1 711	1 762
Community Services	989	1 085	1 155	1 178
Other	3 944	4 116	4 192	4 460
Redundancies	17	27	38	52
Subsidies to Non Budget agencies				
Services	726	1 038	866	896
Redundancies	66	32	63	87
Interest payments	1 683	1 377	1 527	1 497
Superannuation	1 077	1 444	1 451	1 495
Treasurer's advance(c)	—	—	100	—
less—User charges	1 286	1 277	1 347	1 370
<i>Total current expenditure</i>	<i>18 220</i>	<i>19 820</i>	<i>20 516</i>	<i>20 830</i>
Capital expenditure				
Capital works	1 940	2 613	2 665	2 506
Capital grants	1 483	1 001	1 240	1 075
less—Asset sales	160	269	202	275
<i>Total capital expenditure</i>	<i>3 263</i>	<i>3 345</i>	<i>3 703</i>	<i>3 305</i>
<b>Total current and capital expenditure</b>	<b>19 669</b>	<b>23 165</b>	<b>24 219</b>	<b>24 135</b>
<b>SURPLUS OR DEFICIT (–)</b>				
Current account	2 188	1 898	2 246	2 068
Capital account	–2 386	–2 259	–2 622	–2 355
<i>Total result surplus/deficit</i>	<i>–198</i>	<i>–362</i>	<i>–376</i>	<i>–287</i>
Add Advances made/repaid (net)	1 812	607	320	191
<i>Total result surplus/deficit (original budget est. basis)</i>	<i>1 617</i>	<i>245</i>	<i>–56</i>	<i>–96</i>

<sup>a</sup> Includes Department of Training and Education Co-ordination, Department of School Education, Office of the Board of Studies and TAFE.

<sup>b</sup> Includes Attorney Generals Department, Department of Corrective Services and Police Services.

<sup>c</sup> Expenditure from the Treasurer's Advance is included in the relevant current payments figures.

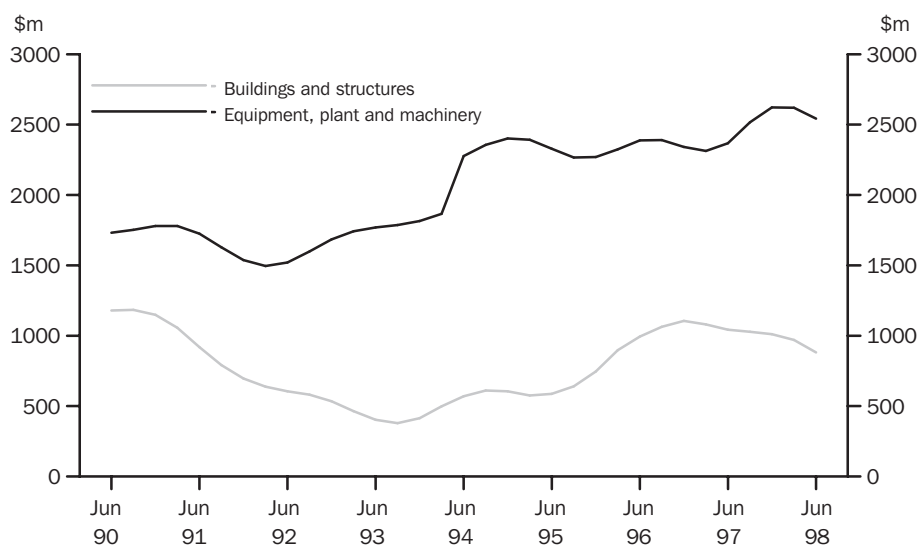
Source: Financial Statement released by NSW Treasury. Figures may differ from data published in annual ABS publications.

Indicator	Latest period	New South Wales			Australia		
		Latest figure	Change from prior period	Change from same period prior year	Latest figure	Change from prior period	Change from same period prior year
		\$m	%	%	\$m	%	%
Type of asset—							
New buildings and structures	June qtr	881	-9.2	-15.5	3332	2.6	-3.9
Equipment, plant and machinery	June qtr	2543	-2.9	7.4	8355	-0.6	8.7
<b>Total</b>	<b>June qtr</b>	<b>3424</b>	<b>-4.6</b>	<b>0.4</b>	<b>11687</b>	<b>0.2</b>	<b>4.8</b>

Source: State Estimates of Private New Capital Expenditure (Cat. no. 5646.0)

Period	Type of asset		Total
	New buildings and structures	Equipment, plant and machinery	
	\$m	\$m	\$m
<b>1997</b>			
March qtr r	1080	2313	3393
June qtr r	1043	2368	3412
September qtr r	1028	2517	3545
December qtr r	1011	2623	3634
<b>1998</b>			
March qtr r	970	2620	3590
June qtr	881	2543	3424

Source: State Estimates of New Capital Expenditure (Cat. no. 5646.0)



Source: State Estimates of New Capital Expenditure (5646.0)

Item	Latest period	New South Wales			Australia		
		Latest figure	Change from prior period	Change from same period prior year	Latest figure	Change from prior period	Change from same period prior year
		\$m	%	%	\$m	%	%
Overseas imports into NSW	Aug 98	3 476	-7.8	15.7	8 156	-8.5	15.7
Total overseas exports(c)	Aug 98	1 557	-3.1	-11.5	7 337	3.2	7.1
Export commodities and SITC(d) code—							
Meat and meat preparations (01)	Aug 98	68	-14.3	-5.0	308	-9.0	4.3
Cereals and cereal preparations (04)	Aug 98	85	-11.8	-54.5	490	52.7	23.2
Wool and other animal hair (268)	Aug 98	42	-35.2	-47.2	171	-21.5	-36.3
Coal, coke and briquettes (32)	Aug 98	355	3.8	11.9	845	2.0	12.0
Iron and steel (67)	Aug 98	92	-17.8	-0.6	135	-21.4	0.1
Aluminium (684)	Aug 98	97	-7.0	-16.8	279	-12.6	-0.6
Office machines and automatic data processing machines (75)	Aug 98	31	-24.0	-29.7	54	-17.9	-28.1

<sup>a</sup> Figures shown for imports are Customs values.

<sup>b</sup> Figures shown for exports are Free On Board (FOB) values.

<sup>c</sup> Excludes re-exported goods.

<sup>d</sup> Standard International Trade Classification Revision 3.

Source: International Trade database

Period	Overseas exports of SITC(d) commodities								
	Overseas imports into NSW	Total overseas exports(c)	Meat and meat preparations (01)	Cereals and cereal preparations (04)	Wool and other animal hair (268)	Coal, coke and briquettes (32)	Iron and steel (67)	Aluminium (684)	Office machines and automatic data processing machines (75)
	\$m	\$m	\$m	\$m	\$m	\$m	\$m	\$m	\$m
<b>1995-96</b>	34 917	16 684	794	822	720	3 338	1 037	1 111	638
<b>1996-97</b>	34 229	17 730	784	1 540	859	3 426	968	993	535
<b>1997-98</b>	38 465	19 671	922	1 551	r1061	4 048	1 168	1 226	522
<b>1997</b>									
June	3 184	1 557	68	204	61	270	57	73	41
July	3 224	1 760	74	146	104	335	65	97	45
August	3 005	1 760	71	186	79	318	93	116	44
September	3 220	1 669	76	159	102	351	59	73	48
October	3 388	1 693	78	95	120	302	123	98	45
November	3 098	1 761	89	149	130	328	98	102	51
December	3 422	1 839	88	165	116	384	89	99	59
<b>1998</b>									
January	2 945	1 436	65	135	72	359	115	118	37
February	2 804	1 459	75	115	82	322	87	82	38
March	3 439	1 502	82	119	73	301	99	107	38
April	3 066	1 480	64	100	66	337	104	100	37
May	3 270	r1669	82	96	67	346	118	109	38
June	3 583	1 642	79	86	49	366	118	125	r42
July	3 769	r1607	79	96	r65	r342	112	r104	41
August	3 476	1 557	68	85	42	355	92	97	31

<sup>a</sup> Figures shown for imports are Customs values.

<sup>b</sup> Figures shown for exports are Free On Board (FOB) values.

<sup>c</sup> Excludes re-exported goods.

<sup>d</sup> Standard International Trade Classification Revision 3.

Source: International Trade database

## SELF-HELP ACCESS TO STATISTICS

<i>PHONE</i>	Call 1900 986 400 for the latest statistics on CPI, Labour Force, Earnings, National Accounts, Balance of Payments and other topics. (Call cost is 75c per minute)
<i>INTERNET</i>	<a href="http://www.abs.gov.au">http://www.abs.gov.au</a>
<i>LIBRARY</i>	A range of ABS publications is available from public and tertiary libraries Australia wide. Contact your nearest library to determine whether it has the ABS statistics you require.

## WHY NOT SUBSCRIBE?

<i>PHONE</i>	+61 1300 366 323
<i>FAX</i>	+61 3 9615 7848

## CONTACTING THE ABS

ABS provides a range of services, including: a telephone inquiry service; information consultancy tailored to your needs; survey, sample and questionnaire design; survey evaluation and methodological reviews; and statistical training.

<i>INQUIRIES</i>	<i>By phone</i>	<i>By fax</i>
Canberra	02 6252 6627	02 6253 1404
Sydney	02 9268 4611	02 9268 4668
Melbourne	03 9615 7755	03 9615 7798
Brisbane	07 3222 6351	07 3222 8283
Perth	08 9360 5140	08 9360 5955
Adelaide	08 8237 7400	08 8237 7566
Hobart	03 6222 5800	03 6222 5995
Darwin	08 8943 2111	08 8981 1218

*POST* Client Services, ABS, PO Box 10, Belconnen, ACT 2616

*EMAIL* [client.services@abs.gov.au](mailto:client.services@abs.gov.au)



2130710011985

ISSN 1031-8534

RRP \$16.00